

# SCM Series

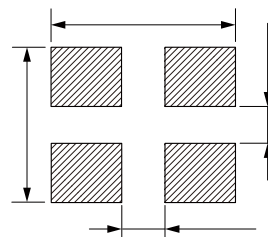
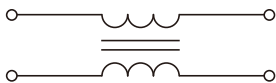
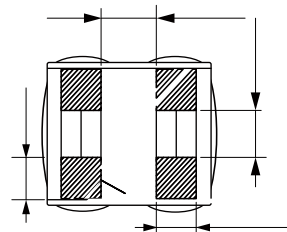
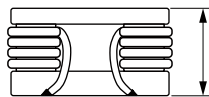
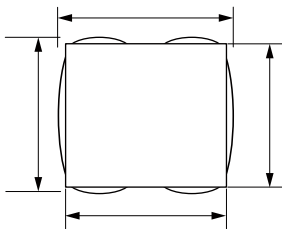


## FEATURES

- 
- 
- 
- 

## APPLICATIONS

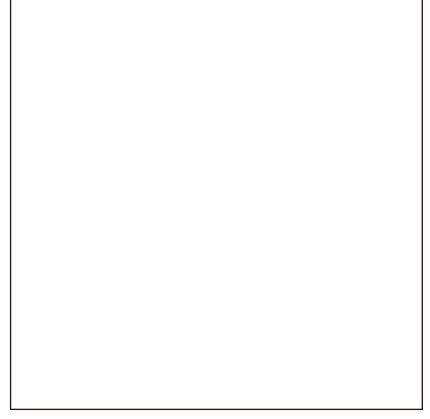
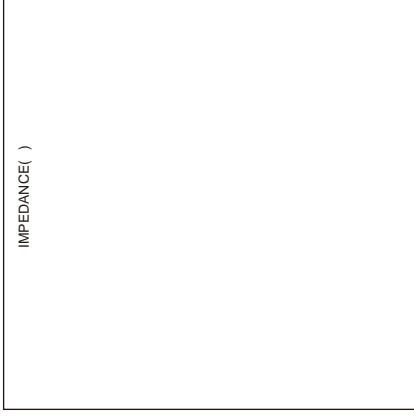
- 
- 



Part No	Impedance @ 100 MHz Min. ( )	Impedance @ 100 MHz Typ. ( )	DC Resistance Max. (m )	Temperature Rise Current Max. (A)
SCM121006-701-90	700	900	12	9.0
SCM121006-801-80	800	1200	20	8.0
SCM121006-102-80	1000	1200	20	8.0
SCM121006-132-40	1200	1400	36	4.0

IMPEDANCE( )

IMPEDANCE( )



:

•

•

•

•

•

•

•

•